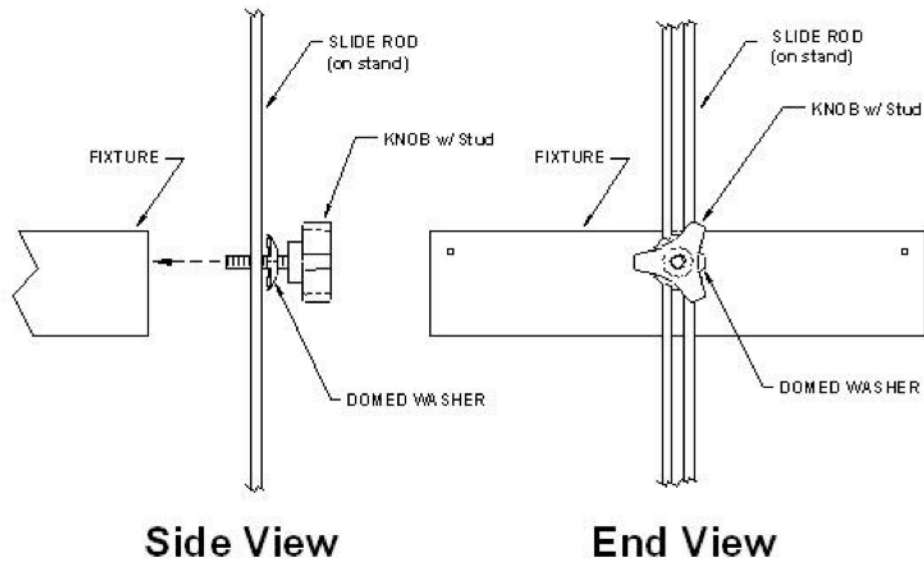


SLIDE FIXTURE ASSEMBLY



YG

1. Remove lamps before installing fixture.
2. Place one washer on the stud of the knob with indented side towards the slide rod. (side view diagram)
3. Hold one end of fixture near the slide rods. Put the stud between the slide rods and align to the hole in the fixture. Thread the knob into the fixture. Tighten knob **FIRMLY**. Repeat on other side.
4. Adjust fixture(s) to desired height and tighten knobs **SECURELY**. (Adjusting fixtures more than 6" per side may cause fixture to bend.)
5. Replace lamps, (make sure lamps are locked in place)

IMPORTANT Lamp Installation ALL FIXTURES ARE TESTED PRIOR TO SHIPPING

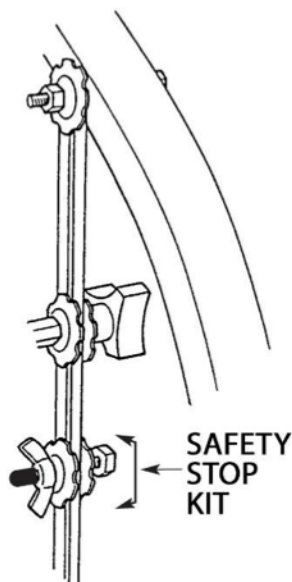
If the lamps are not properly installed in your fixture the following may result:

- ❖ The fixture may not fully light up, the lamps might **flicker** or **just glow**.
- ❖ The lamps will turn black on the ends.

Prior to calling to report a fixture will not work, we urge you to please test and make sure all lamps are properly installed and in working condition. Sometimes during shipping the filaments in the lamps will break, as a result the lamp itself will not light

Rapid Start fluorescents must be seated in the sockets properly with the lamp base pins making good contact against the spring clips in the sockets. Although Rapid Start lamps may start if improperly seated, excessive end blackening and severely shortened lamp life will result.

Watt-Saver fluorescent lamps must be operated in an ambient temperature of 60° F minimum.



SAFETY STOP KIT

**To prevent fixtures from accidentally falling:
Place the safety stop kit below the fixture and
above the top of the plants.**

**2 Screws
2 Wing Nuts
4 Domed Washers**

IMPORTANT - READ FIRST!

LAMP INSTALLATION

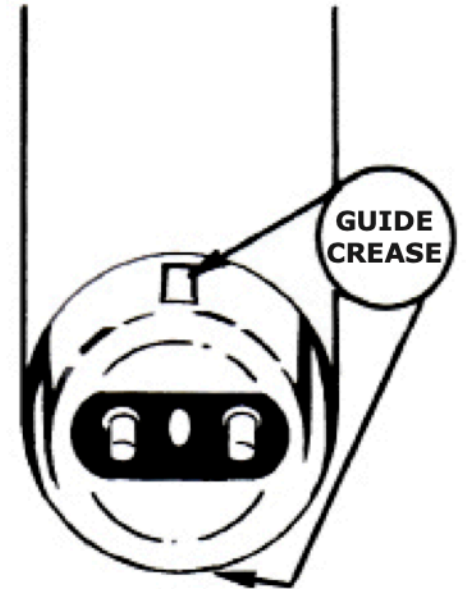
ALL FIXTURES ARE TESTED PRIOR TO SHIPPING. Please read instructions below for proper lamp installation.

Rapid start fluorescent bi-pin lamps must be seated properly into the lamp socket making a good connection.

How to install lamps correctly:

Each bi-pin lamp has two "guide creases" on the metal cap at each end of the fixture. These guides are there to help you align the lamp correctly in the socket. When installed correctly one crease on each end of the lamp will be visible and lined up directly in the center of the lamp socket opening.

Gently set the lamp into the lamp holder sockets until the lamp pins rest on the lamp socket. Gently turn the lamp approx ¼ turn either clockwise or counter clockwise until the lamp socket makes a small click or you feel the lamp go into position. Gently lift up on the lamp to make sure that both ends are installed correctly. The guide creases on the lamps should be lined up exactly with the opening in the lamp socket.



Although the lamp can be turned further into the fixture which feels like it is secure, the lamp has actually turned too far in the socket. Back off the lamp slightly until the guide creases are lined up with the opening in the lamp socket.

Lamps may start if improperly seated which may result in excessive end blackening and shortening of lamp life.

If lamps worked when the fixture was on and now do not work after turning off and back on again, check to make sure the lamps are still in the correct location.

If swirling or flickering occurs, lamp and/or fixture may be below normal operating temperatures. Let run a few minutes, turn fixture off and then back on again.

Sometimes during shipping the filaments in the lamps or the bi-pins may break. Inspect the lamps. All that may be needed is a new lamp.

